

# For Lease

## South Fork Commerce Center

12th Street and Clarkson Dr

660 South 12th Street  
Elko, NV



## Building 1

**Commercial / Office / Industrial Flex**

Building Size	: 12,170 SF (80' x 150')
Divisible to	: 2,434 (30' x 80')
Parking	: 5.5 Spaces per 1,000 SF
Loading Doors	: 5 Grade Hi 12'W x 14'H
Power	: 3 Phase, 277 Volt, 200 Amp
Sprinklers	: 0.2 Gal/Min Over 1,500 SF
Fiber Optic	: Available
Cable TV	: Available
Clear Height	: 16' at Eaves, 22' at Center
Office Space	: Build to Suit
Rental Rate	: \$1.25 Per SF Per Month Triple Net

Reno, NV  
T | 775 | 329-4000  
[www.GCPNevada.com](http://www.GCPNevada.com)

**GALLAGHER COMMERCIAL**

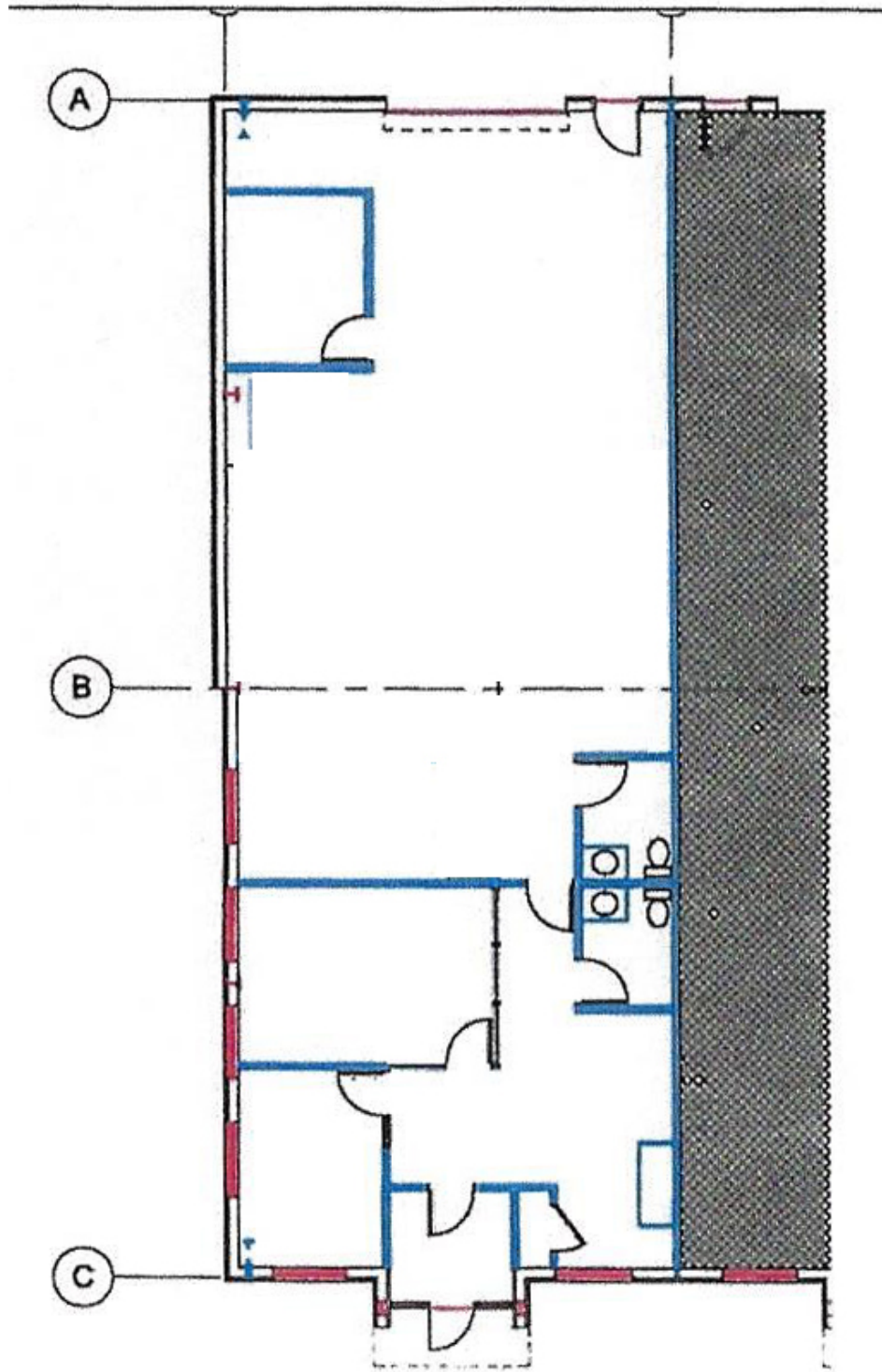
PROPERTIES

*Commercial Real Estate Services*

Frank Gallagher, SIOR  
[Frank@GCPNevada.com](mailto:Frank@GCPNevada.com)  
C | 775 | 771-0471

# South Fork Commerce Center

12th Street and Clarkson Dr, Elko, NV



Reno, NV  
T | 775 | 329-4000  
[www.GCPNevada.com](http://www.GCPNevada.com)

**GALLAGHER COMMERCIAL**  
— PROPERTIES —

*Commercial Real Estate Services*

Frank Gallagher, SIOR  
[Frank@GCPNevada.com](mailto:Frank@GCPNevada.com)  
C | 775 | 771-0471



# South Fork Commerce Center

12th Street and Clarkson Dr, Elko, NV

## Location



Reno, NV  
T | 775 | 329-4000  
[www.GCPNevada.com](http://www.GCPNevada.com)

**GALLAGHER COMMERCIAL**

— | PROPERTIES | —

*Commercial Real Estate Services*

Frank Gallagher, SIOR  
[Frank@GCPNevada.com](mailto:Frank@GCPNevada.com)  
C | 775 | 771-0471

All information is deemed accurate but is not guaranteed. You and your tax and legal advisors should conduct your own investigation of the property and transaction.